

Wishing You a Joyous Easter & Passover

Egg Hunt Inside!

Market Place™
PUBLICATIONS.COM

Gino's
TRATTORIA
& PIZZERIA

Every Bunny Loves Fine Italian Cuisine!

Join Us With Your Family on

Easter Sunday

Full Regular Menu & Dinner Specials Avail.
Reservations Recommended.

BAR SPECIAL

Drunk Bunny \$10

APPETIZER

Seafood Fritto Mistro (Fried shrimp & calamari) \$30

ENTREES

Chicken Oreganata

Oven baked with oreganata breadcrumbs served over roasted carrots & zucchini, choice of Gino's side salad or garlic & oil spaghetti. \$26

Salmon Marechiara

Fresh salmon filet with littleneck clams and mussels in a Marechiara sauce over homemade pappardelle pasta \$32

Baby Lamb Chops

Grilled baby lamb chops seasoned with rosemary and garlic. Served with roasted potatoes, asparagus, and string beans \$28

Skirt Steak

Served w/ mashed potatoes and sauteed vegetables \$35

Veal Picatta

Pan seared veal and artichoke hearts in a classic lemon picatta sauce. Served with your choice of Gino's salad or spaghetti In garlic and oil sauce \$30

Pick Up & Delivery Avail. on Easter

Holiday Helper!
Catering
1/2 or full trays see complete menu
Let Us Help Cook For Your Holiday Table.

online ordering available at

www.GinosPizzaNewHydePark.com

516-488-1366 • 1113 Jericho Tpke., New Hyde Park



Get Market Place Digital Every Week! Sign Up: www.MarketPlacePublications.com

Hop In For a New Look

New Stylish Frames Just In,
Including Smart Glasses.

PROGRESSIVES

Complete Pair,
Quality Frame & Lenses

\$229

SPORTS SAFETY GLASSES

30% OFF

For kids & adults, #1 Choice

SAME DAY GLASSES!

45 minutes in most cases

EYE EXAM

\$39



Sunny Skies!
Take advantage of our BOGO
deal which includes
SUNGLASSES
Prescription or Non Prescription

**Buy One Pair,
Get Second Frame**
50% OFF
Valid on any prescription complete
pair of glasses or sunglasses.
Mix & match.
Higher price prevails. Some restrictions may apply.
With ad expires 4/30/26



WIZE EYES

EYEWEAR OF NEW HYDE PARK

Serving Long Island Over 30 Years

Large Selection of Stylish & Designer Frames

• Gucci • Tom Ford • Versace • YS • Coach • Raybans • Oakley & More.

The Doctor is available 6 days a week

Specials for limited time only. Some restrictions apply. Available at the New Hyde Park location only.

Most Insurance & Union Plans Accepted

2090 B Hillside Ave., New Hyde Park,
(Corner of Marcus Ave.)

516-358-4040

www.WizeEyesNewHydePark.com

**OPEN
7 DAYS**



WIN Egg-Citing Prizes!

WIN

GOLDEN TICKET - Nintendo Switch

Donated by Herman Singh, Omni Mortgage

SILVER TICKETS - LEGO Building Set

Donated by Rafe Lieber, Marathon Abstract

PRONTO GIFT CARD

Donated by Nick Schmike, RCG Mortgage

ONE FREE BUYER APPRAISAL (\$500)

Donated by Michael Martin Fairway Bank

HOME DEPOT GIFT CARD

Donated by Michael Martin Fairway Bank

& more!

FIND THIS FOR GRAND PRIZE
GOLDEN TICKET
NINTENDO SWITCH



SPRING EGG HUNT

FREE ENTRY

FOLLOW US ON FACEBOOK & INSTAGRAM FOR CLUES!



Join Us for an Egg Hunt Extravaganza in New Hyde Park!

WE'RE HIDING EGGS ALL AROUND NEW HYDE PARK!

Each Egg Contains a Special Treat or Prize!

PLUS... 1 GOLDEN & SILVER TICKETS

FIND EGGS APRIL 3rd & 4th

Keep the treats/prizes

TURN in SILVER & GOLD Tickets to collect prizes.

On Monday, April 6th - 1pm

1582 Hillside Ave., NHP

or call 516-216-1007



What Is Your Home Worth?
Ask the Experts! Free Home Market Analysis

ZI Realty 1582 Hillside Ave., New Hyde Park • 516-216-1007
We speak your language – call today for our Gold Star Service!

RECIPE OF THE WEEK

Maple-Glazed Easter Ham

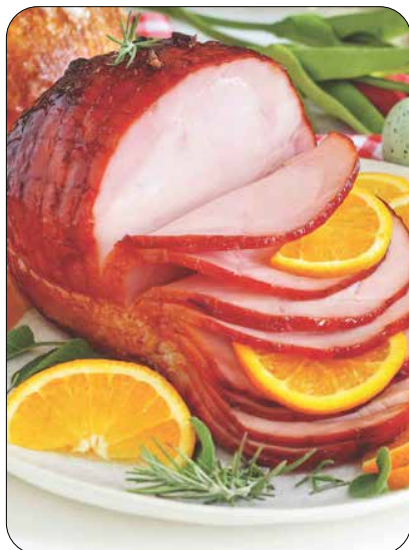
- 1 bone-in spiral-cut ham (8-9 lb)
- 1 cup pure maple syrup
- 1/2 cup packed dark brown sugar
- 1/2 cup (4 oz) bourbon
- 1/2 tsp grated fresh ginger
- 1/4 tsp ground cinnamon
- orange slices and wedges, for garnish
- fresh rosemary sprigs, for garnish

Preheat oven to 350 F.

Place ham in large roasting pan and fill with 1/2 inch of water. Cover pan with aluminum foil and bake about 2 hours, basting every 30 minutes with juices from pan, until meat registers 120 F at thickest portion.

In medium saucepan over medium-high heat, stir maple syrup, brown sugar, bourbon, ginger and cinnamon; bring to boil. Cook, stirring occasionally, until thickened, 6-8 minutes. Remove from heat. Cover to keep warm and set aside.

Remove ham from oven and discard foil. Increase oven temperature to 400 F. Using pastry brush, glaze ham with 1/3 cup maple-bourbon mixture.



Bake ham about 30 minutes until top is lightly caramelized and meat registers 145 F at thickest portion, brushing with remaining glaze every 10 minutes.

Remove from oven and transfer ham to serving platter. Let rest 15 minutes and garnish with orange slices, orange wedges and rosemary sprigs.

Recipe adapted from Southern Living

The Finest Desserts For Your Holiday Table



three sprinkles
BAKE SHOP

Grain Pie, Hot Cross Buns
Pizza Rustica,
Easter Egg Bread, Lamb Cake,
Decorated Cookies,
Cakes & Lollipops,
Chocolate Bunnies & more.

For Passover:
Jelly Roll, Honey Cake,
Marble Sponge Cake,
Chocolate Covered Macaroons,
Almond Horns & Boats,
Bullseye Cookies

Formerly the Gourmet Bake Shop,
Original Baker is Back!

775 Hillside Ave., New Hyde Park
(At Lakeville Rd.) 516-354-3930



Spring In Bloom, Hop On Over!



Happy
Easter

<i>Tulips & Hyacinth</i>	\$12 ⁹⁹		<i>Beautiful Lush Hydrangeas</i>	\$35 ⁹⁹
<i>Pansy Hanging Baskets</i>	\$29 ⁹⁹		<i>Gorgeous Easter Lilies</i>	\$19 ⁹⁹
<i>Lots of Blooms Daffodils</i>	\$12 ⁹⁹		<i>Palm Crosses</i> 	\$7 ⁹⁹

Floral Designs by Milena
Landscape Design & Supplies
Flowering Trees & Shrubs
Propane Gas Exchange



Milena's
GARDEN CENTER
 Inc.

2000 Jericho Tpke., New Hyde Park • 516-616-5165

HRS: M-F 7am-5pm, Sat 7am-6pm, Sun & Easter 8am-3pm

Scotts



4 STEP ANNUAL FEEDING PROGRAM

Sale	\$119.99
Less Mail-in Rebate	-\$20.00
Final Cost	\$99 ⁹⁹

Spruce Up For Spring Holiday Sale

CLEARANCE SALE

On In Stock

- Carpeting • Area Rugs
- Runners • Linoleum

PLUS: Large Selection of Remnants & Rolls



Area Rugs
up to
30% Off

Open Easter Sunday





Carpet Runners



Stylish Vinyl Floors

\$150 OFF

Any Carpet Purchase of 70 Sq. Yards or More With Padding or Any Flooring of 500 s.f. or more

With coupon only. Expires 4/30/26. Not to be combined with advertised specials. Must present at time of purchase. Coupon must be redeemed prior to order.

Since 1988

Class Carpet

millenniumclasscarpet.com

Hours: Mon - Fri 9:30-7
Sat 9:30-6, Sun 12-5

- ✓ FREE ESTIMATES
- ✓ FREE MEASUREMENTS

FINANCING AVAILABLE

LOWEST PRICE GUARANTEED

425 Jericho Tpke., New Hyde Park

516-488-1818

(2 Blocks West of Lakeville Road & 1 Block West of Covert Ave.)

Local Events & Happenings

(516) 997-7909

TONH SENIOR PROGRAM- MEET YOUR NEIGHBORS

4/1, 4/8. 11am-12pm. Project Independence. Seniors come together once a week to share laughs, conversation, support and fun. Seating is limited call 516-869-6311.

EGG PLANTER PAINTING OLD WESTBURY

4/2 or 4/3, 2-3pm. Old Westbury Gardens, Participants will receive paint supplies and a mini egg-shaped planter, then plan and paint their designs before planting a seed inside to take home and grow. Class will be held at The Barn at Orchard Hill. \$23 adults, \$21 seniors, \$13 kids. Reserve online. 71 Old Westbury Rd., Old Westbury. 516-333-0048. Register: www.OldWestburyGardens.org

MONTHLY MEDITATION

4/2, 6-7pm. at Sands Point. Led by Hildur Pallsdottir. Held in the beautiful Mansion or Garden weather permitting. Register online. Planting Fields. \$17 per class, non members, \$25. 12 Middle Neck Rd., Sands Point. www.SandsPointPreserveConservancy.org

DINOSAUR EGG HUNT

4/2-4/4, 10am-4pm. Center For Science, Teaching & Learning. Venture into the woods on a pre-historic quest to find the dinosaur eggs filled with treasures. Included with museum admission. 1450 Tangelwood Rd., Rockville Centre, www.cstl.org

MINDFUL MOVEMENT

NATURE KIDS FEST
4/2-4/12 10am-4pm. Center For Science, Teaching & Learning. Daily bug hikes, pond scooping, nature crafts & more. \$12 kids & seniors, \$15 adults. 1450 Tangelwood Rd., Rockville Centre, www.cstl.org

PLANTS, PEOPLE & PLACE FIRST FRIDAYS

4/3, 10-11:30am. At Planting Fields. Guide will bring guests to [The Planting Fields Stand](http://ThePlantingFieldsStand.com). 2025 Catalyst artist Sam Van Aken's grove of four multi-grafted fruit trees. From there, the tour passes through the Main Greenhouse and continues toward the Main House, where additional artworks by Van Aken are on view. Learn about rare varieties of fruits. Includes Collage workshop. \$25 p.p. 1395 Planting Fields Rd., Oyster Bay. For more details & reserve: www.plantingfields.org

BELLMORE CAR SHOW

4/3, 5-10pm. Then Every Friday night until Oct. 30th. Weather permitting, at the Bellmore LIRR lot on Broadway. Free admission, \$5 to enter your car. For more info: 516-679-1875 or www.bellmorechamber.com



WALKING & WRITING AT JONES BEACH

4/3, 1:30-3pm. Adults & teens 12 & up. A mindful walk outdoors noticing textures, colors and sounds. We will write a theme or poem using at least 5 sensory impressions we gathered on the walk. A lovely way to connect with wildlife and nature while sharpening our storytelling skills. Free. Jones Beach Energy and Nature Center, 150 Bay Pkwy, Wantagh. RSVP required: www.jonesbeachenc.org

DINOSAUR ADVENTURE & EGG HUNT- GARVIES

4/4, various time slots. Perfect for young explorers and families. Egg relay game, guided discovery and activities. Adults \$8, kids 4-10 \$12, Helpers Age 11-12 \$5. Reserve online. Garvies Point Museum & Preserve, 50 Barry Dr., Glen Cove. www.garviespointmuseum.com

EASTER CELEBRATION FRANKLIN SQUARE

4/4, 12-4pm. Hosted by San Paolino Giglio Society. Easter egg hunt, giveaways, cotton candy, bounce house, special guest The Easter Bunny. In the parking lot of Oro Puro, 1033 Hempstead Tpke., Franklin Square. www.sanpaolino.org

BARNYARD EGG HUNT QUEENS COUNTY FARM

4/4 10am-5pm. Kids and their grownups can delight in this classic springtime tradition. Hunt for prize-filled eggs in Queens Farm's historic orchard, snap photos with Whiskers the Bunny, and enjoy outdoor games that make memories worth keeping. Egg-hunt every 30 minutes. \$17 general admission. Kids 2 and under free. Register online: www.queensfarm.org 73-50 Little Neck Pkwy, Floral Park.

EASTER EGG HUNT OLD WESTBURY

4/4, 10:30-2pm. Perfect for ages 3-6. First a tale of Peter Rabbit, then onto the great big egg hunt in the Cottage Garden. \$22 adults, \$20 seniors, \$12 kids. Reserve online for time slot tickets 71 Old Westbury Rd., Old Westbury. 516-333-0048. www.OldWestburyGardens.org

SHED THE MEDS

4/4, 8am-12pm. Bring your old and unused medicines for a safe disposal and to protect the environment. 802 West Shore Rd., Port Washington. For more info call 311 or 516-869-6311

MEET THE EASTER BUNNY NEW HYDE PARK VILLAGE

4/4, 10am. Rain or shine. At Village Hall, 1420 Jericho Tpke., New Hyde Park. For more info call 516-354-0022.

STORYTIME CORNER AT JONES BEACH

4/4, 11am-12pm. Ages 0-8. An hour of storytelling. Our educators will make picture book stories come alive. Free. Jones Beach Energy and Nature Center, 150 Bay Pkwy, Wantagh. Walk ins welcome. www.jonesbeachenc.org

TOWN-WIDE EGG HUNT IN NEW HYDE PARK

4/3 & 4/4 anytime. Zi Realty hosts this egg scavenger hunt. The eggs are hidden in various spots in New Hyde Park and each contains a treat or prize. Some contain a golden or silver ticket to win grand prize Nintendo Switch or many other prizes. Keep the treats and to redeem prizes, bring the ticket into the office located at 1582 Hillside Ave., NHP on Mon. April 6th at 1pm. You can also call 516-216-1007 for other arrangements or more info. Follow them on Instagram or Facebook where clues to where the eggs are hidden will be provided. Free.

EASTER SUNDAY VINTAGE CAR PARADE, GARDEN CITY

4/5, 12pm. Hosted by Garden City Chamber of Commerce. Free event, Franklin Ave., between Ninth and Eleventh Streets. If you would like to register a car \$20 per car, day of event \$25. www.GardenCityChamber.org

AMAZING ANIMAL ENCOUNTER ON EASTER

4/5. 1:30-2pm. Ages 3+ Long Island Children's Museum. Learn about the care we give our animals. Free with museum admission. For more info: www.licm.org 11 Davis Ave., Garden City

LIGHT/ART KIDS COLLABORATION AT LICM

4/6 or 4/8. Various times. Long Island Children's Museum. Age 4+. In this educator-led, hands-on workshop, participants will be introduced to the history and process of lantern making while creating their own unique composition. Free with museum admission. Reserve your spot: www.licm.org 11 Davis Ave., Garden City

PHOTOGRAPHY HIKE AT JONES BEACH

4/6, 1:30-3pm. Adults & teens 12 & up. All levels of photographers welcome. Bring your camera. Cell phone cameras also allowed. \$4. Jones Beach Energy and Nature Center, 150 Bay Pkwy, Wantagh. RSVP required: www.jonesbeachenc.org

SCAVENGER HUNTS

4/6 thru 4/10. 9am-4pm. At Planting

Fields. A week of free sensory-friendly exploration for all levels. A self-guided scavenger hunt will be available each day at the Education Center. Stop by anytime during the week to pick up your scavenger hunt and enjoy the grounds at your own pace. Guardians must stay with their children. 1395 Planting Fields Rd., Oyster Bay. For more details & to register: www.plantingfields.org

VET TEC 101 RABBITS

4/6. 10am-12:00pm. Ages 9-12 drop off. Students will meet and care for a variety of our bunnies and discover differences between wild and domesticated rabbits. It is also an opportunity to get crafty and DIY some simple toys for them to play with. Space is limited. \$34p.p. Register online: www.alleypond.org Alley Pond Environmental Center. 229-10 Northern Blvd., Douglaston

SPRING BREAK WORKSHOP

4/6, 1-3pm. At Planting Fields, Ages 6+ Designed for ages 6+ to learn about food and plant science. This program offers flexible, sensory-inclusive activities and is welcoming and accessible to participants of all abilities and ages. \$25 per child, 1395 Planting Fields Rd., Oyster Bay. For more details & to register: www.plantingfields.org

NASSAU NORTH SHORE CHRISTIAN WOMEN'S CLUB

4/7, Noon: Luncheon - Special feature: Soloist: Wayne Soderlund and Jeanne Andersen Plus inspirational speaker, Jennifer Halfont, Journey of Faith [Call to reserve by 4/3](http://Calltoreserveby4/3.com): Jane Voss 516-742-0861 or Pat Pedlev

APRIL 1, 2026 - APRIL 7, 2026 • MARKETPLACE PUBLICATIONS.COM • PAGE 5

Market Place
PUBLICATIONS

Easter Egg Hunt



Goog Luck!
Happy Hunting!



WIN \$30 Gift Card

Here's The Rule...Throughout the book 1 ad contains this special Easter Egg. The hidden egg will look exactly like this one and the same size.



SAMPLE EGG ACTUAL SIZE

Tap here to get the entry form and indicate what ad contained the hidden egg.

Deadline is April 30, 2026. 3 Winners will be drawn at random & notified by phone and posted on our Facebook & Instagram page.

Follow Us on Facebook & Instagram and you will be automatically entered into the contest for another chance to win.

Get Market Place Digital Book Emailed to you every week!
Sign Up Free:
www.MarketPlacePublications.com
Help Us Grow: Tell A Friend!

HIGH PRICES PAID FOR GOLD!



Turn In Your Unworn Jewelry
A Great Time To Sell It!

We Buy Gold Everyday
also Diamonds, Platinum,
Silver, Flatware etc.

HERRICKS JEWELERS *HJ* 2449 Jericho Tpke. Garden City Park
(516) 742-4590 • Herricksjewelers.com

Everything For Spring Gardening




EAGLE NURSERIES

Lawn Mowers &
Power Equipment
Landscape Design
Seed, Soil, Fertilizers

Florist & Gifts

225 Jericho Tpke., New Hyde Park | 516-354-2810 | www.eaglenurseries.net



Keep Your Independence
Your Health. Your Culture. Your Parker.

Customized Health Care On-Site or at Home

- Short Term Rehabilitation and Sub-Acute Care
- Long Term Care Facility
- Indian Cultural Unit
- Dementia Unit
- Dialysis - Community / On-site
- Palliative care
- Hospice - Community / On-site
- Medical House Calls - Parker At Your Door
- Home Health Care
- Dementia GUIDE Model
- Willing Hearts, Helpful Hands
- Research and Grants



271-11 76th Avenue New Hyde Park, NY 11040
718-289-2100 | 877-727-5373 | parkerinstitute.org

More Local Events

(516) 997-7909

SPRING BREAK FOR ART AT THE MANES CENTER

4/7-4/9, 11am-12:30pm or 1-2:30pm. Three days of family artmaking inspired by the art on view in the museum's current exhibitions. A different project will be offered every day. Most suitable for kids age 2-12 and their adult companion or for teens. \$10 kids, \$20 adults. Attend one or all 3! Register www.nassaumuseum.org 1 Museum Dr, Roslyn.

CREATURE FEATURE AT JONES BEACH

4/7, 1:30-2:30pm. All ages. Come meet our animals and reptiles for this indoor lecture. \$4p.p. Jones Beach Energy and Nature Center, 150 Bay Pkwy, Wantagh. RSVP required: www.jonesbeachenc.org

SPRING BREAK WORKSHOP

4/7, 1-3pm. At Planting Fields, Ages 6+ Participants will tune in to the sounds of nature through guided listening and hands-on experimentation. From rustling leaves, birdsong to the patter of rain, kids will explore how natural materials—sticks, seed pods, and stones can be used to create sounds and make instruments. This program offers flexible, sensory-inclusive activities and is welcoming and accessible to participants of all abilities and ages. \$25 per child, can be dropped off or accompanied by an adult, 1395 Planting Fields Rd., Oyster Bay. For more details & to register: www.plantingfields.org

MESSY MASTERPIECE WORKSHOP AGES 6+

4/8, 1-3pm. At Planting Fields. Hands-on art experience focused on creativity, sensory exploration, and self-expression. Using a variety of materials, including paints, clay, and natural elements such as leaves and twigs, children will explore color, texture, and form. All abilities welcome. \$25 per child, can be dropped off or accompanied by an adult, 1395 Planting Fields Rd., Oyster Bay. For more details & to register: www.plantingfields.org

SEASONAL SPROUTS OLD WESTBURY

4/8 or 4/9, 11am-12pm. Families can build curiosity and problem-solving skills during this one-hour guided experience through the gardens and at the barn at Orchard Hill. Children will explore how things work in nature through experiments and hands-on activities designed to spark imagination and early STEM thinking. \$22 adults, \$20 seniors, \$12 kids. Reserve online. 71 Old Westbury Rd., Old Westbury. 516-333-0048. www.OldWestburyGardens.org



CINDERELLA SUNRISE THEATRE CO.

4/9 11am & 4/12, 12pm. This engaging production encourages young audiences to embrace kindness and courage with this upbeat musical. Sunrise Theatre Company, 222 Pettit Ave., Bellmore. All tickets \$16.78. Purchase tickets: 516-218-2782 or www.SunriseTheatreLL.com

HIKE & DISCOVER

4/9, 1-3pm. Planting Fields. Age 6+ sensory inclusive activities for all abilities. 1395 Planting Fields Rd., Oyster Bay. \$25 per child. Includes 1 parent. For more details & reserve: www.plantingfields.org

BEACH LIFE DISCOVERY AT GARVIES POINT

4/10, various time slots. Seashore casting craft. \$5 p.p. Garvies Point Museum & Preserve, 50 Barry Dr., Glen Cove. www.garviespointmuseum.com

APPLE BLOSSOM CARNIVAL QUEENS COUNTY FARM

4/11 thru 4/26 weekends. 10am-5pm. Held on the stunning grounds of the Queens County Farm Museum in the apple orchard. This carnival is for all ages, including Kiddy Rides, Adult & Thrill Rides, Skill Games & Carnival Foods! \$19-\$39 admission, Buy tickets in advance for discount. Order online: www.queensfarm.org 73-50 Little Neck Pkwy, Floral Park.

FAMILY ARTMAKING AT THE MANES CENTER

4/11, Drop in between 12-3pm. Children ages 2-14 and their adults. Get inspired by the art and objects in the galleries and then join at The Manes Art Education Center to explore and discover different materials to create your own original artwork. This weeks' theme, Lassow Robots. Kids \$10, adults \$20, members are free. Price includes museum and supplies. Pre-register online. www.nassaumuseum.org One Museum Drive, Roslyn.

SPIRITUALITY FOR SINGLES AGE 40+

4/11, 7pm. Snacks, pizza, engaging presentation by renowned Tony Bellizzi. \$10 donation. Ages 40+. At St. Aidan Parish, 510 Willis Ave., Williston Park. For more info call Ray: 516-561-6994.

PRINCESS CONCERT-MADISON THEATRE

4/11, 4/12, Various times. Enchanting concert of A Dream Is A Wish with new adventures and Disney classics. Concert only, tea and concert or breakfast and concert. Tickets starting at \$30. Madison Theatre at Molloy U. 1000 Hempstead Ave., Rockville Centre. Tickets call 516-323-4444 OR www.madisontheatre.org

CELEBRATE HOLI AT LICM

4/12. 11am-4pm. Long Island Children's Museum. Age 4+. Holi, the Festival of Colors. Originating in India, this Hindu festival marks the end of winter and the arrival of the colorful spring season. During this joyous celebration, families eat sweets, dance to traditional folk music and throw colorful powder made from flowers called *gula*. Free with museum admission. Reserve your spot: www.licm.org 11 Davis Ave., Garden City

MODEL TRAIN SHOW NASSAU COUNTY

4/12, 11am-4pm. Coordinated by Trainville. Operating train layouts on display by local model train clubs. \$7 adults, \$4 kids age 4-11. At the Levittown Hall, 201 Levittown Pkwy, Hicksville. For more info & other shows visit: www.trainville.com

QIGONG AT SANDS POINT PRESERVE

4/12, 11:30-12:30am Adina Dabija leads the first class of 5 throughout the year in the Castle room. Learn a classical sequence of slow movements to cultivate harmony and vitality, balance your body's organs, alleviate joint pain and enhance your immune system. Members \$17, Non-members \$25. Discount to register for all 5 classes. 12 Middle Neck Rd., Sands Point. Call 516-570-2185 or Pre-register: www.SandsPointPreserveConservancy.org

NASSAU COUNTY MODEL TRAIN SHOW

4/12, 11am-4pm. Trainville Hobby Depot Operating layouts in several scales on display from local train clubs. Benefits the NCPD Explorers Program. \$7 adults, \$4 kids age 4-11. Levittown Hall, 201 Levittown Pkwy, Hicksville. For more info & other shows visit: www.trainville.com

WATERCOLOR CLASS SANDS POINT PRESERVE

4/14 or 4/21, 10am-12pm Professional artist Michelle Shain will demonstrate and guide you on basic watercolor techniques including composition, color mixing, layering and final details. The workshop is designed for beginners but welcomes experienced artists who want to revisit the basics and have the opportunity to paint in a castle. Members \$55, Non-members \$60. Register for one or both classes. 12 Middle Neck Rd., Sands Point. Call 516-570-2185 must Pre-register: www.SandsPointPreserveConservancy.org

SEND US YOUR EVENTS

Published weekly on www.MarketPlacePublications.com
Have your event listed free. Send at least 1 week in advance to:
info@marketplacepublications.com

APRIL 1, 2026 - APRIL 7, 2026 • MARKETPLACE PUBLICATIONS.COM • PAGE 7

EARTH TALK

From the Editors of E/The Environmental Magazine

Are disposable plastic straws really so terrible for the environment and what are some good alternatives that won't get mushy in liquid? - Mary B., Hicksville, NY

A single-use straw, also known as a disposable straw, is made of plastic and is intended to be thrown away after one drink. The materials that make these straws are non-biodegradable, meaning that their waste is not broken down naturally and often leads to landfill pollution. These plastic straws can take up to 200 years to decompose, and unlike organic materials, they are only fragmented into smaller pieces known as microplastics that have lasting impacts on ecosystems.

Straws are among the top waste items found in beach clean-ups and are often ingested by marine animals, leading to injury and death. According to the Journal of Science Advances, over eight million metric tons of plastic enter oceans annually, with single-use plastic straws being significant contributors. When microplastics are consumed by marine life and enter the food chain, they eventually harm human health. "It's an ingestion issue," says Jon Forrest Dohlin, Director of the Wildlife Conservation Society New York Aquarium. "And as it does break down to smaller and smaller pieces, it works its way into the food chain and is absorbed by animals, including, by the way, humans." Moreover, due to the small

size of disposable straws, they often fall through recycling machinery and are left to be discarded in landfills and oceans. Disposable straws also pose health risks to humans and animals through the harmful BPA chemicals that can lead to medical problems like reproductive issues, developmental delays and more.

Despite these environmental and health harms, disposable straws continue to be used as a result of the low production costs of plastic and convenience, but with plastic straws becoming an increasing climate concern, alternative straws have become a greater priority. These substitutes include straws that are either made of biodegradable or reusable materials, including paper, metal, bamboo, glass, silicone and more.

Oftentimes, the biggest complaint against low-cost biodegradable straws, specifically those made out of paper, is that they get mushy in liquid. However, metal and silicone straws drastically reduce waste, being both reusable for years and easy to clean without changing the taste of your favorite drinks. In 2019, Samantha Grindell, an author at Business Insider, wrote that while pasta straws (yes, made from pasta) worked for water, she preferred other alternatives for drinks like coffee. "I think they're a great alternative to plastic or paper straws in restaurants, but I'd prefer to use a reusable metal straw on a day-to-day basis," she says.

EarthTalk, c/o E/The Environmental Magazine, P.O. Box 5098, Westport, CT 06881; submit it at: www.emagazine.com/earthtalk/thisweek/ or e-mail: earthtalk@emagazine.com

BIRTHDAY CLUB



WIN!

Bag of Bagels & Cream Cheese Hand Rolled Bagels of New Hyde Park

This Week's Winning Birthday APRIL 29TH

Winner for Birthdate January 4: Melody Bauer of New Hyde Park

TAP HERE TO ENTER ONLINE marketplacepublications.com/contests



FOLLOW US

@marketplacepublications

Check our weekly digital edition at Marketplacepublications.com to see if you are a winner from a previous week. Winner will be called & announced with their name & photo on our Facebook & Instagram pages. Answer must be received by following Tuesday at 12pm.

Picture It!

Guess This Familiar Place in Nassau County



WIN! Bag of Bagels & Cream Cheese Hand Rolled Bagels of New Hyde Park

March 25th Answer:

Hempstead Lake Park

Winner:

Debi Santos of Carle Place

TAP HERE TO ENTER ONLINE marketplacepublications.com/contests

1 winner chosen per week from correct entries. Answers must be received by following Tues at 12 pm. Winner will be called & announced with their name & photo on our Facebook & Instagram pages.

LUCKY SHAMROCK WINNERS!

Congratulations! Each won a \$30 Gift Card to Three Sprinkles Bake Shop

Jean Braun of Stewart Manor
Ellen Pantina of New Hyde Park
Michael Plante of Floral Park

Thanks to all who entered!

Save on Windows and Doors!

Buy One, Get One

40% OFF

ALL WINDOWS AND DOORS

AND

Take an Extra

\$200 OFF

YOUR ENTIRE PURCHASE

AND

Affordable Financing!

**NO Money Down,
NO Monthly Payments,
NO Interest for 12 months**

Minimum purchase of 4 - Interest accrues during promotional period but is waived if paid in full within 12 months.

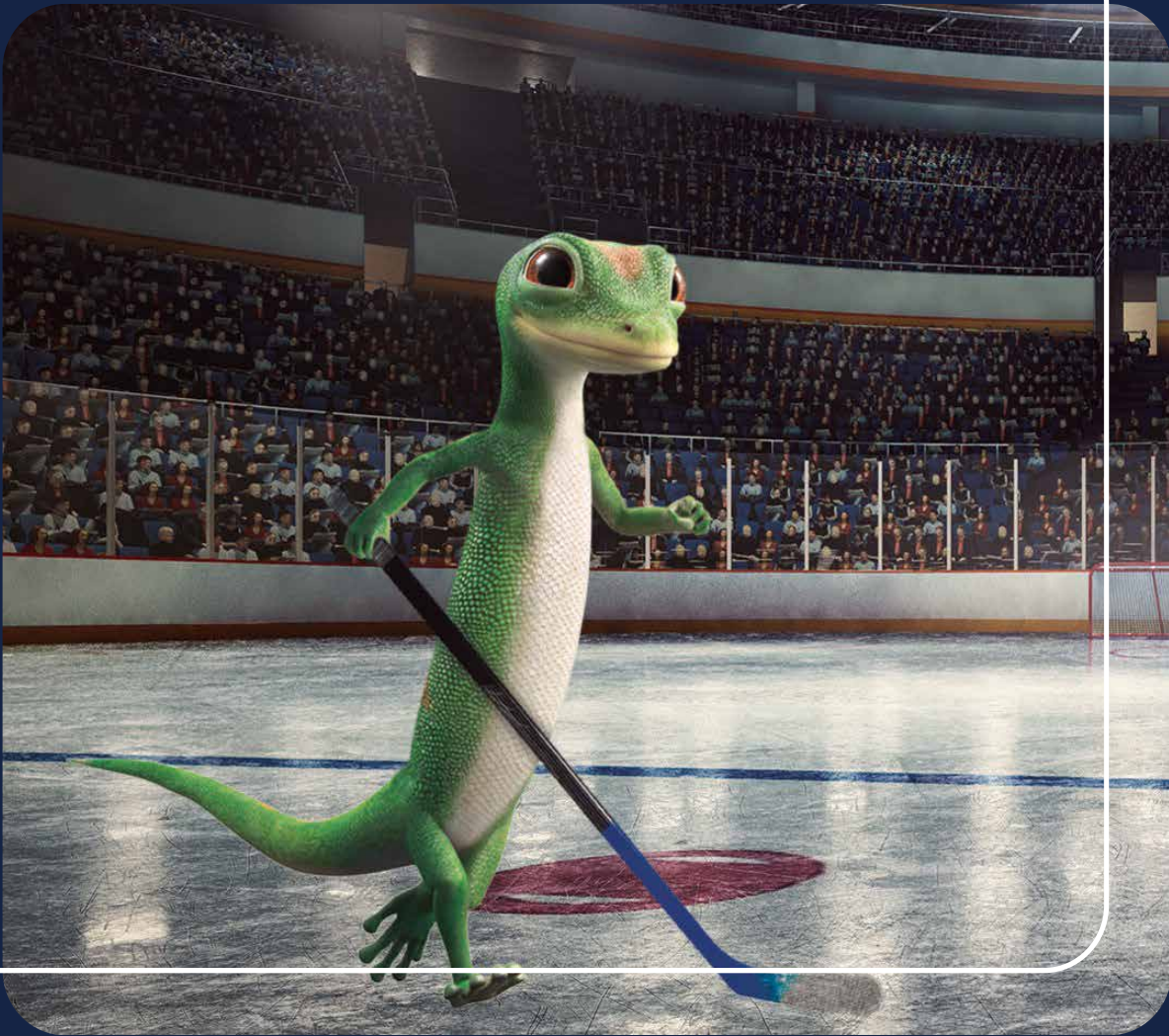


**RENEWAL
by ANDERSEN**
FULL-SERVICE WINDOW & DOOR REPLACEMENT

Call by March 31
to schedule your **FREE** consultation.

855-863-5384

DETAILS OF OFFER: Offer expires 3/31/2026. Not valid with other offers or prior purchases. Buy one (1) window or entry/patio door, get one (1) window or entry/patio door 40% off, and 12 months no money down, no monthly payments, no interest when you purchase four (4) or more windows or entry/patio doors between 12/1/2025 and 3/31/2026. Additional \$200 off your purchase, minimum purchase of 4, taken after initial discount(s), when you purchase by 3/31/2026. 40% off windows and entry/patio doors are less than or equal to lowest cost window or entry/patio door in the order. Subject to credit approval. 12-month Promo Period: when no payments are due, interest accrues but is waived if the loan is paid in full before the Promo Period expires. Any unpaid balance owed after the Promo Period, plus accrued interest, will be paid in installments based on the terms disclosed in the customer's loan agreement. Financing is provided by various financial institutions without regard to age, race, color, religion, national origin, gender, or familial status. Savings comparison based on purchase of a single unit at list price. Available at participating locations and offer applies throughout the service area. See your local Renewal by Andersen location for details. License numbers available at renewalbyandersen.com/license. Some Renewal by Andersen locations are independently owned and operated. "Renewal by Andersen" and all other marks where denoted are trademarks of their respective owners. © 2026 Andersen Corporation. All rights reserved. RBA14301.



GEICO® Local Office

YOUR INSURANCE

MVP



Ryan McGowan

677 Hillside Ave

New Hyde Park

516-302-2130

geico.com/new-hyde-park-mcgowan

¡Hablamos Español!



Agency Independently Owned and Operated by Rosebud Insurance Agency Inc Some discounts, coverages, payment plans, and features are not available in all states, in all GEICO companies, or in all situations. GEICO is a registered service mark of Government Employees Insurance Company, Washington, DC 20076; a Berkshire Hathaway Inc. subsidiary. GEICO Gecko image © 1999-2026. © 2026 GEICO

Your Time. Your Health. Your Independence.



Queens - Long Island
Renal Institute, Inc.

Designed for the Comfort and Convenience of Dialysis Patients

Queens-Long Island Renal Institute, QLIRI, empowers you with kidney care options that keep you in charge:



Custom scheduling to fit your life, work, and family needs



A dedicated ambulance partner to help eliminate delays and stress



Home dialysis options for more flexibility and privacy



Regain time, comfort, and confidence — while receiving expert care every step of the way.

271-11 76th Ave. New Hyde Park, NY 11040
QLIRI.ORG | 718-289-2600



Located on the Lobby of
Parker Jewish Institute
FOR HEALTH CARE AND REHABILITATION



SAVE \$250 ON ALL TOURS!
MORE THAN 50 GUIDED TOURS AVAILABLE



MUST BOOK BY 3/12

Historic Route 66 – 100th Anniversary

16 DAYS STARTING AT
\$3,549 \$3,299*

BASED ON APR 18, 2026 DEPARTURE

- Visit sights like the historic starting point of Route 66 in Chicago, the Cadillac Ranch in Amarillo, and the “End of the Trail” sign in Santa Monica
- Explore natural wonders of the Grand Canyon, Petrified Forest National Park, and the Painted Desert
- Discover Seligman, known as the “historic birthplace of Route 66.”



MUST BOOK BY 3/31

Grand Alaskan Cruise & Tour

12 DAYS INSIDE CABIN
STARTING AT **\$3,549 \$3,299***

BASED ON JUL 8, 2026 DEPARTURE

- Marvel at Alaska’s natural beauty in Denali National Park
- Visit Alaska’s most famous locals at the Alaska Wildlife Conservation Center
- Cruise past the glaciers of Glacier Bay and Wrangell St. Elias National Park
- Travel through the legendary Inside Passage

CALL US: 1-855-818-0427

*Per person based on double occupancy & includes tax service/gov't fees.
Ask your Travel Consultant for terms & conditions. Add-on airfare with transfers available for most major gateways.

RECIPE OF THE WEEK

Homemade Easter Egg Cupcakes

- 1 cup all-purpose flour
- 1 cup sugar
- 1/3 cup cocoa powder
- 1 tsp baking soda
- 1/2 tsp baking powder
- 1/2 tsp salt
- 1 egg, at room temperature
- 1/2 cup buttermilk, at room temperature
- 1/2 cup hot water
- 1/4 cup olive or coconut oil
- 1 tsp vanilla extract

- Frosting:**
- 3 sticks unsalted butter, softened and cubed
 - 3 cups powdered sugar, sifted
 - 2-3 tbsp milk
 - 1 tsp pure vanilla extract
 - 1 pinch salt
 - 2-3 drops brown food coloring
 - egg-shaped chocolate-coated candies

To make cupcakes: Preheat oven to 350 F. Line 12-cup muffin tin with cupcake liners.

In bowl of electric mixer, sift flour, sugar, cocoa powder, baking soda, baking powder and salt.

In medium bowl, whisk egg, buttermilk, water, oil and vanilla extract.

Mix dry ingredients on low speed 1 minute. Add wet ingredients. Mix 2 minutes on medium speed and



scrape sides and bottom of bowl. Mix 1 minute on medium speed.

Divide evenly among cupcake liners.

Bake 12-15 minutes, or until toothpick inserted in center comes out almost clean.

Cool cupcakes on wire rack.

Frosting: Using paddle attachment of electric mixer, whip butter 8 minutes on medium speed until pale and creamy. Add powdered sugar, milk, vanilla extract and salt; mix on low speed 1 minute. Increase speed to medium and mix 6 minutes until frosting is light, creamy and fluffy. Add food coloring and whip 1 minute.

Recipe adapted from Southern Living