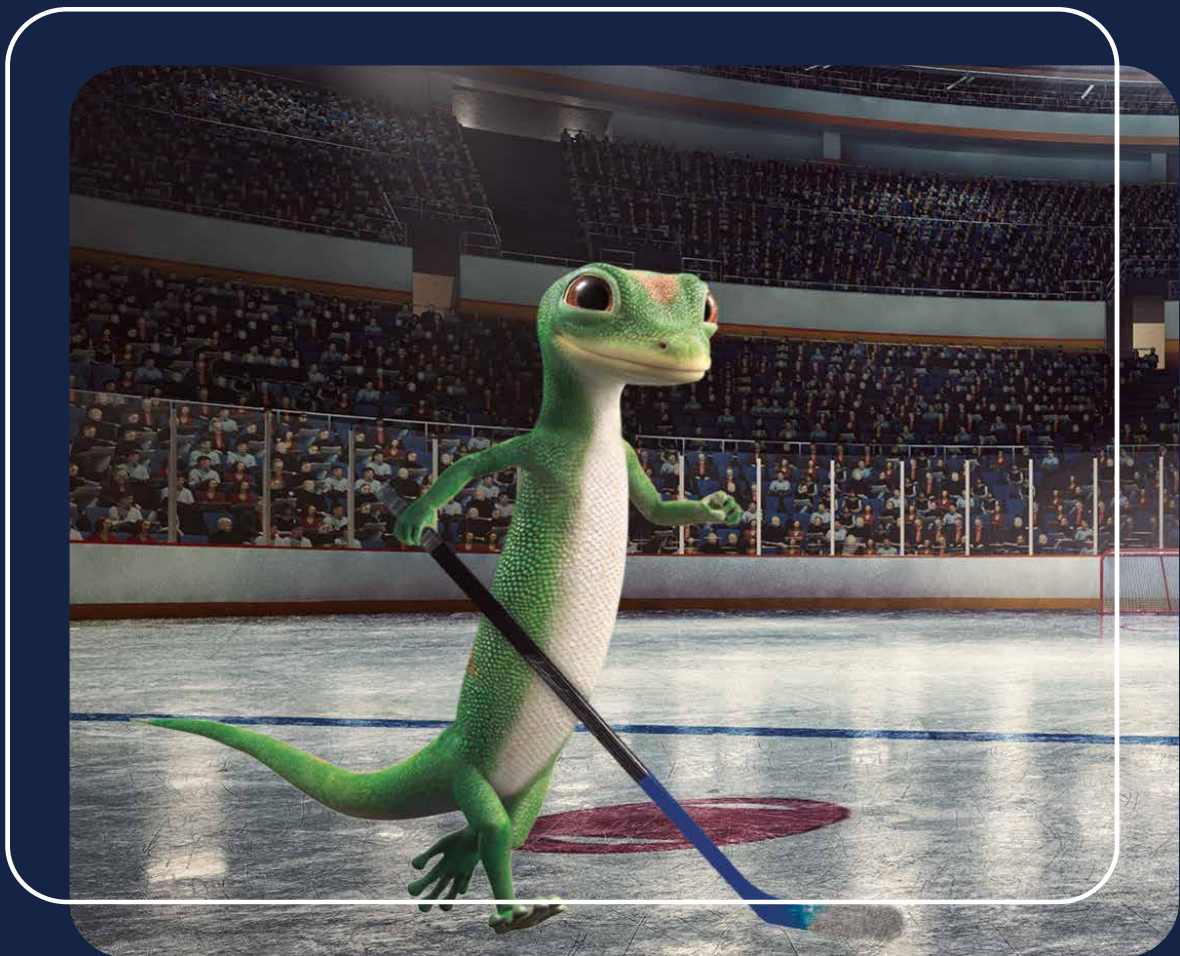


Check out all the fun local events inside

TAP
HERE

Market Place™

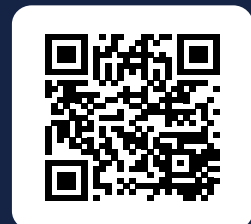
PUBLICATIONS.COM



GEICO® Local Office

YOUR INSURANCE

MVP



Ryan McGowan

677 Hillside Ave

New Hyde Park

516-302-2130

geico.com/new-hyde-park-mcgowan

¡Hablamos Español!

Agency Independently Owned and Operated by Rosebud Insurance Agency Inc Some discounts, coverages, payment plans, and features are not available in all states, in all GEICO companies, or in all situations. GEICO is a registered service mark of Government Employees Insurance Company, Washington, DC 20076; a Berkshire Hathaway Inc. subsidiary. GEICO Gecko image © 1999-2026. © 2026 GEICO



Get Market Place Digital Every Week! Sign Up: www.MarketPlacePublications.com



PATTI ORR

Licensed Sales Associate
30+ Yrs. Experience

516-526-5417

Email: porr@eracaputo.com

Visit my website for
Valuable info, listings
and reviews

www.HomesbyPattiOrr.com



5.0 ★★★★★



★★★★★
5 STAR AGENT



CIRCLE OF
ACHIEVEMENT AWARD WINNER

The Spring Market Is Hopping.

Homes In The Area Are in Demand & Selling For Top Dollar

Thinking of a Move? Let's Talk.



Newest Reviews:

It was effortless working with Patti. From the start she took care of all the things that google mentions and the ones that it does not. From the house photos, to open houses, managing offers ,dealings with the buyer, the attorneys, insights into showcasing the house, advising and assisting on fixing things that'd make a difference, she was on top of things and made it look effortless.

All in all, she was amazing and have nothing but gratitude in our hearts for hand holding us during such big change in our lives.
- A. Puri

We had a great experience with Patti as our agent. Patti was a great help, she has a ton of experience and knows how to drive a sale to completion! She responds quickly and listens to the customer, but gives her own insights and advice from her wealth of experience. She has decades of experience in the New Hyde Park area. She was great to work with, we appreciate all her help and expertise!
- B. Wong

COMING SOON
April 11



NEW HYDE PARK

In the Manor!

Beautiful 4 BR Wideline Cape.
Nicely Updated Including
New Roof & Heating.
Huge EIK, 2 Updated Baths & Finished
Basemt.
Mint on Lovely 52x100 Property!
\$949,000

SOLD
OVER 900K!



NEW HYDE PARK

Beautiful 4 BR 2 Bath Wideline. Spacious
60x100 Lot, Short Walk to NHP & Garden
City LIRR. \$959,000

SOLD



NEW HYDE PARK

Charming 3 BR in the Village. LR w/Firepl,
EIK w/Pantry, FDR, 200 Amp Electric,
Spacious 60x100 Lot! \$779,000



CAPUTO REALTY

EST. 1961

314 Jericho Tpke., New Hyde Park • 516-437-0333

WHAT IS YOUR HOME WORTH?
Call Patti For a No Obligation Free Analysis.

BIRTHDAY CLUB



WIN!

**Bag of Bagels
& Cream Cheese**

**Hand Rolled Bagels
of New Hyde Park**

This Week's Winning Birthday
SEPTEMBER 8TH

Winner for Birthdate April 29:
Mary Admirand Coppelli of Mineola

TAP HERE TO ENTER ONLINE
marketplacepublications.com/contests



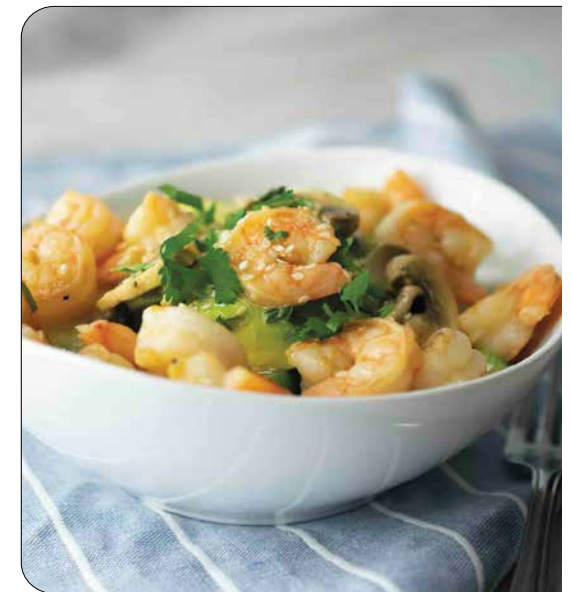
FOLLOW US
[@marketplacepublications](https://www.facebook.com/marketplacepublications)

Check our weekly digital edition at
Marketplacepublications.com to see if you are a
winner from a previous week. Winner will be called &
announced with their name & photo on our Facebook &
Instagram pages. Answer must be received by following Tuesday at 12pm.

RECIPE OF THE WEEK

Orange Shrimp Quinoa Bowls

- 1 cup quinoa
- 1 cup orange juice
- 1 tbsp hot sauce
- 1 tbsp honey
- 1 tbsp soy sauce
- 4 tbsp olive oil
- 1 tbsp lime juice
- 1 tbsp white miso
- 1/4 cup butter
- 1 1/2 lb shrimp, peeled, deveined and tails removed
- 1/4 tsp salt
- 1/8 tsp pepper
- 1 cup mushrooms, sliced
- 1 red bell pepper, diced
- 1 cucumber, sliced into half moons
- 5 green onions, sliced
- 1 avocado, sliced
- 1 tsp sesame seeds
- 2 tbsp cilantro, chopped



Cook quinoa according to package instructions. Set aside.

In medium bowl, whisk orange juice, hot sauce, honey, soy sauce, vegetable oil, lime juice and miso until combined. Pour one-quarter of liquid into separate bowl. Set aside. Add shrimp to remaining mixture and marinate 15 minutes.

Heat large skillet over medium heat with butter. Add shrimp, salt and pepper. Cook 2 minutes on each side until pink. Add mushrooms and cook until tender.

In two serving bowls, divide quinoa, bell pepper, cucumber, onions, avocado and shrimp. Sprinkle sesame seeds and cilantro over both bowls.

Find more wholesome and healthy recipes at Culinary.net.



Keep Your Independence
Your Health. Your Culture. Your Parker.



Customized Health Care On-Site or at Home

- Short Term Rehabilitation and Sub-Acute Care
- Long Term Care Facility
- Indian Cultural Unit
- Dementia Unit
- Dialysis - Community / On-site
- Palliative care
- Hospice - Community / On-site
- Medical House Calls - Parker At Your Door
- Home Health Care
- Dementia GUIDE Model
- Willing Hearts, Helpful Hands
- Research and Grants



271-11 76th Avenue New Hyde Park, NY 11040
718-289-2100 | 877-727-5373 | parkerinstitute.org

BUY 1, GET 1
40% OFF
All Windows and Doors¹

PLUS
\$200 OFF
Your Entire Purchase¹

PLUS
NO Money Down
NO Monthly Payments
NO Interest for 12 months¹

MINIMUM PURCHASE OF 4 - INTEREST ACCRUES DURING PROMOTIONAL PERIOD BUT IS WAIVED IF PAID IN FULL WITHIN 12 MONTHS

REPLACEMENT WINDOW AND DOOR EVENT




Call by June 30 to schedule your FREE consultation.

TOLL FREE 855-863-5384

¹DETAILS OF OFFER: Offer expires 6/30/2026. Not valid with other offers or prior purchases. Buy one (1) window or entry/patio door, get one (1) window or entry/patio door 40% off, and 12 months no money down, no monthly payments, no interest when you purchase four (4) or more windows or entry/patio doors between 4/1/2026 and 6/30/2026. 40% off windows and entry/patio doors are less than or equal to lowest cost window or entry/patio door in the order. Additional \$200 off your purchase, minimum purchase of 4 required, taken after initial discount(s), when you purchase by 6/30/2026. Subject to credit approval. 12 month Promotional period when no payments are due, interest accrues but is waived if balance is paid in full before Promotional Period expires. Any unpaid balance owed after Promotional Period, plus accrued interest, will be paid in installments based on terms disclosed in the financing agreement. Financing is provided by various financial institutions without regard to age, race, color, religion, national origin, gender, or familial status. Savings comparison based on purchase of a single unit at list price. Available at participating locations and offer applies throughout the service area. See your local Renewal by Andersen location for details. License numbers available at renewalbyandersen.com/license. Some Renewal by Andersen locations are independently owned and operated. *Review aggregator survey of 5-star reviews among leading national full-service window replacement companies. January 2024 Reputation.com. "Renewal by Andersen" and all other marks where denoted are trademarks of their respective owners. © 2026 Andersen Corporation. All rights reserved. RBA14301

Spruce Up For Spring Holiday Sale

**HUGE SELECTION
IN STOCK & READY**

CLEARANCE SALE

On In Stock

- Carpeting • Area Rugs
 - Runners • Linoleum
- PLUS: Large Selection of Remnants & Rolls

**Area Rugs
up to
30% Off**

**Open Easter
Sunday**



\$150 OFF

**Any Carpet Purchase of 70 Sq. Yards
or More With Padding
or Any Flooring of 500 s.f. or more**

With coupon only. Expires 4/30/26. Not to be combined with advertised specials. Must present at time of purchase. Coupon must be redeemed prior to order.

**Large Selection in our Showroom
Or Free Shop at Home Service**

Since 1988

Millennium Class Carpet

millenniumclasscarpet.com

Hours: Mon - Fri 9:30-7
Sat 9:30-6, Sun 12-5

- ✓ **FREE ESTIMATES**
 - ✓ **FREE MEASUREMENTS**
- FINANCING AVAILABLE**

**LOWEST PRICE
GUARANTEED**

425 Jericho Tpke., New Hyde Park
516-488-1818
(2 Blocks West of Lakeville Road & 1 Block West of Covert Ave.)

Your Time. Your Health. Your Independence.



**Queens - Long Island
Renal Institute, Inc.**

Designed for the Comfort and Convenience of Dialysis Patients

Queens-Long Island Renal Institute, QLIRI, empowers you with kidney care options that keep you in charge:



Custom scheduling to fit your life, work, and family needs



A dedicated ambulette partner to help eliminate delays and stress



Home dialysis options for more flexibility and privacy

5 DIAMOND
Patient Safety Program



Regain time, comfort, and confidence — while receiving expert care every step of the way.

271-11 76th Ave. New Hyde Park, NY 11040
QLIRI.ORG | 718-289-2600



**Located on the Lobby of
Parker Jewish Institute**
FOR HEALTH CARE AND REHABILITATION

Local Events & Happenings

(516) 997-7909

LIGHT/ART KIDS COLLABORATION AT LICM

4/8. Various times. Long Island Children's Museum. Age 4+. In this educator-led, hands-on workshop, participants will be introduced to the history and process of lantern making while creating their own unique composition. Free with museum admission. Reserve your spot: www.licm.org 11 Davis Ave., Garden City

TONH SENIOR PROGRAM-MEET YOUR NEIGHBORS

4/8. 11am-12pm. Project Independence. Seniors come together once a week to share laughs, conversation, support and fun. Seating is limited call 516-869-6311.

SCAVENGER HUNTS

4/8 thru 4/10. 9am-4pm. At Planting

Fields. A week of free sensory-friendly exploration for all levels. A self-guided scavenger hunt will be available each day at the Education Center. Stop by anytime during the week to pick up your scavenger hunt and enjoy the grounds at your own pace. Guardians must stay with their children. 1395 Planting Fields Rd., Oyster Bay. For more details & to register: www.plantingfields.org

SPRING BREAK FOR ART AT THE MANES CENTER

4/8-4/9, 11am-12:30pm or 1-2:30pm. Three days of family artmaking inspired by the art on view in the museum's current exhibitions. A different project will be offered every day. Most suitable for kids age 2-12 and their adult companion or for teens. \$10 kids, \$20 adults. Attend one or all 3! Register online: www.nassaumuseum.org One Museum Drive, Roslyn.

MESSY MASTERPIECE WORKSHOP AGES 6+

4/8, 1-3pm. At Planting Fields. Hands-on art experience focused on creativity, sensory exploration, and self-expression. Using a variety of materials, including paints, clay, and natural elements such as leaves and twigs, children will explore color, texture, and form. All abilities welcome. \$25 per child, can be dropped off or accompanied by an adult, 1395 Planting Fields Rd., Oyster Bay. For more details & to register: www.plantingfields.org

SEASONAL SPROUTS OLD WESTBURY

4/8 or 4/9, 11am-12pm. Families can build curiosity and problem-solving skills during this one-hour guided experience through the gardens and at the barn at Orchard Hill. Children will explore how things work in nature through experiments and hands-on activities designed to spark imagination and early STEM thinking. \$22 adults, \$20 seniors, \$12 kids. Reserve online. 71 Old Westbury Rd., Old Westbury. 516-333-0048. www.OldWestburyGardens.org



NATURE FESTIVAL

4/9- 4/12. 10am-4pm. Center For Science, Teaching & Learning. Dinosaurs, animals, crafts, face painting, pond scooping, guided hike, dinosaur egg hunt & more! \$12 kids and seniors, \$15 adults. 1450 Tangelwood Rd., Rockville Centre www.cstl.org

CINDERELLA SUNRISE THEATRE CO.

4/9 11am & 4/12, 12pm. This engaging production encourages young audiences to embrace kindness and courage with this upbeat musical. Sunrise Theatre Company, 222 Pettit Ave., Bellmore. All tickets \$16.78. Purchase tickets: 516-218-2782 or www.SunriseTheatreLL.com



HIKE & DISCOVER

4/9, 1-3pm. Planting Fields. Age 6+ sensory inclusive activities for all abilities. 1395 Planting Fields Rd., Oyster Bay. \$25 per child. Includes 1 parent. For more details & reserve: www.plantingfields.org

BELLMORE CAR SHOW

4/9, 5-10pm. Then Every Friday night until Oct. 30th. Weather permitting, at the Bellmore LIRR lot on Broadway. Free admission, \$5 to enter your car. For more info: 516-679-1875 or www.bellmorechamber.com

BEACH LIFE DISCOVERY AT GARVIES POINT

4/10, various time slots. Seashore casting craft. \$5 p.p. Garvies Point Museum & Preserve, 50 Barry Dr., Glen Cove. www.garviespointmuseum.com

APPLE BLOSSOM CARNIVAL QUEENS COUNTY FARM

4/11 thru 4/26 weekends. 10am-5pm. Held on the stunning grounds of the Queens County Farm Museum in the apple orchard. This carnival is for all ages, including Kiddy Rides, Adult & Thrill Rides, Skill Games & Carnival Foods! \$19-\$39 admission, Buy tickets in advance for discount. Order online: www.queensfarm.org 73-50 Little Neck Pkwy, Floral Park.

FAMILY ARTMAKING AT THE MANES CENTER

4/11, Drop in between 12-3pm. Children ages 2-14 and their adults. Get inspired by the art and objects in the galleries and then join at The Manes Art Education Center to explore and discover different materials to create your own original artwork. This weeks' theme, Lasso Robots. Kids \$10, adults \$20, members are free. Price includes museum and supplies. Pre-register online. www.nassaumuseum.org One Museum Drive, Roslyn.

COMPOSTING SERIES QUEENS COUNTY FARM

4/11, 11:30am-12:30pm. Join our Composting series to discover the dirt on turning scraps into soil, explore the whole cycle of decay and regrowth, and unlock the secrets of nature's recycling system. Get ready for hands-on lessons that will change how you see your trash. Free but reserve your spot: www.queensfarm.org 73-50 Little Neck Pkwy, Floral Park.

SPIRITUALITY FOR SINGLES AGE 40+

4/11, 7pm. Snacks, pizza, engaging presentation by renowned Tony Bellizzi. \$10 donation. Ages 40+. At St. Aidan Parish, 510 Willis Ave., Williston Park. For more info call Ray: 516-561-6994.

PRINCESS CONCERT-MADISON THEATRE

4/11, 4/12, Various times. Enchanting concert of A Dream Is A Wish with new adventures and Disney classics. Concert only, tea and concert or breakfast and concert. Tickets starting at \$30. Madison Theatre at Molloy U. 1000 Hempstead Ave., Rockville Centre. Tickets call 516-323-4444 OR www.madisontheatre.org

ROCK HALL MUSEUM ART & REVOLUTIONARY WAR

4/12, 1:30pm. Lecture: The American Revolutionary War (1775-1783) was not only a military and political conflict but also a cultural revolution that reshaped how people saw themselves and their nation. Art during this era played a vital role in inspiring patriotism, documenting history, and shaping the emerging identity of the United States. \$10p.p., \$8 seniors. Reserve your spot by calling 516-239-1157. 199 Broadway, Lawrence.



CELEBRATE HOLI AT LICM

4/12. 11am-4pm. Long Island Children's Museum. Age 4+. Holi, the Festival of Colors. Originating in India, this Hindu festival marks the end of winter and the arrival of the colorful spring season. During this joyous celebration, families eat sweets, dance to traditional folk music and throw colorful powder made from flowers called *gula*. Free with museum admission. Reserve your spot: www.licm.org 11 Davis Ave., Garden City

MODEL TRAIN SHOW NASSAU COUNTY

4/12, 11am-4pm. Coordinated by Trainville. Operating train layouts on display by local model train clubs. \$7 adults, \$4 kids age 4-11. At the Levittown Hall, 201 Levittown Pkwy, Hicksville. For more info & other shows visit: www.trainville.com

QIGONG AT SANDS POINT PRESERVE

4/12, 11:30-12:30am Adina Dabija leads the first class of 5 throughout the year in the Castle room. Learn a classical sequence of slow movements to cultivate harmony and vitality, balance your body's organs, alleviate joint pain and enhance your immune system. Members \$17, Non-members \$25. Discount to register for all 5 classes. 12 Middle Neck Rd., Sands Point. Call 516-570-2185 or Pre-register: www.SandsPointPreserveConservancy.org

NASSAU COUNTY MODEL TRAIN SHOW

4/12, 11am-4pm. Trainville Hobby Depot Operating layouts in several scales on display from local train clubs. Benefits the NCPD Explorers Program. \$7 adults, \$4 kids age 4-11. Levittown Hall, 201 Levittown Pkwy, Hicksville. For more info & other shows visit: www.trainville.com

APRIL 8, 2026 - APRIL 14, 2026 • MARKETPLACE PUBLICATIONS.COM • PAGE 5

More Local Events

WATERCOLOR CLASS SANDS POINT PRESERVE

4/14 or 4/21, 10am-12pm
Professional artist [Michelle Shain](#) will demonstrate and guide you on basic watercolor techniques including composition, color mixing, layering and final details. The workshop is designed for beginners but welcomes experienced artists who want to revisit the basics and have the opportunity to paint in a castle. Members \$55, Non-members \$60. Register for one or both classes. 12 Middle Neck Rd., Sands Point. Call 516-570-2185 must Pre-register:
www.SandsPointPreserveConservancy.org

FREE HEALTH SCREENINGS

4/14, 10am-2pm. St. Francis Mobile Clinic. For adults, blood pressure check, blood tests for cholesterol and diabetes & wellness visit. No appointment needed, Clinton G. Martin Park, 1601 Marcus Ave., New Hyde Park

POLLINATOR GARDENS SPRING CLEAN-UP

4/14, 10am North Shore Land Alliance
Celebrate National Gardening Day by helping care for the pollinator gardens at the MacDonald Property, which support the bees, butterflies and other pollinators that frequent our garden. Free but advance registration is needed. 3 Dogwood La., Locust Valley. Call 516-922-1029.
www.northshorelandalliance.org

AAPI HEROES- MADISON THEATRE

4/16, 3pm or 7pm. Dynamic contemporary dance honoring Asian American icons such as Bruce Lee, Anna May Wong, astronaut Sunita Williams, Yo-Yo Ma and NuWa. Tickets starting at \$40. Madison Theatre at Molloy U. 1000 Hempstead Ave., Rockville Centre. Tickets call 516-323-4444 OR
www.madisontheatre.org

BROWN BAG LECTURES AT THE MANES CENTER

4/16,5/14, 6/18, 1pm. Join Museum Docent Riva Ettus for her popular Brown Bag Lecture. Explore NCMA's exhibition, *250 Years of Art on Long Island*, through a lively and informative presentation. Participants will have the opportunity to ask questions following the talk. Free with museum fee.
www.nassauxmuseum.org One Museum Drive, Roslyn.



DOG DAY FESTIVAL OLD WESTBURY

4/18, 10am-6pm. Leashed dogs are welcome to walk through the gardens in designated areas and enjoy the spring blooms. Nice selection of dog vendors, treats & services offered. Dog access included with general admission. Dogs also allowed on 4/19 as well. 71 Old Westbury Rd., Old Westbury. 516-333-0048.
www.OldWestburyGardens.org

SHELTER SURVIVAL AT VANDERBILT

4/18, 2pm. Survival skills with Mike Evans. Hands on to learn and build safe shelter sites and skills for survival. \$40p.p. \$36 members. 180 Little Neck Rd., Centerport, 631-854-5579. Register online: www.vanderbiltmuseum.org

DINOSAUR DAZE AT GARVIES POINT

4/18 & 19, 10am-4pm. Prehistoric timeline, genuine fossils & remarkable replicas, "fossil" dig, crafts, dino dress-up, play activities & games, photo-ops with Coelophysis, dino nest & more. PLUS exhibits, nature trails, gift shop, scavenger hunts & face painting! \$15 for adults \$10 children 3-12 years. Garvies Point Museum & Preserve, 50 Barry Dr., Glen Cove. www.garviespointmuseum.com

EARTH DAY CLEAN UP HEMPSTEAD LAKE PARK

4/18, 10am-12pm. Adults age 12+. Join at Hempstead Lake State Park for a Free Volunteer Family Fun Day. Gloves, bags and pick up sticks provided. Register in advance by going to Eventbrite.com and search for #NatureAdventure or #HempsteadLake. Field 1, 880 Lake Drive., West Hempstead.

BOATER SAFETY COURSES TOWN OF N. HEMPSTEAD

4/19 or 5/16 8am-4pm. NYS requires all operators of boats or personal watercraft to complete this free 8 hr. course. Michael J. Tully Park, New Hyde Park. Must register online for 3/21 class:
www.register-ed.com/events/view/239615
4/19 class:
www.register-ed.com/events/view/239618
for 5/16 class:
www.register-ed.com/events/view/239619

FOOD, FUN & FELLOWSHIP WITH BINGO

4/19, 4:30-pm. Chicken Francese dinner, dessert, Bingo w/ many prizes. \$35 adults, \$15 kids under 12. First Presbyterian Church, 16 South 9th St. New Hyde Park Call for reservations: 516-354-5013

BROADWAY BIG BAND BASH- PLAZA THEATRE

4/19, 2:30pm. Lights up and brass blazing Susan Marten headlines Broadway Big Band Bash, a high-octane celebration of Broadway's golden age powered by a sensational live big band. With roaring horns, lush swing arrangements, and electrifying musicianship front and center, the orchestra drives a thrilling afternoon of classic show tunes — from soaring ballads to show-stopping favorites. Tickets are \$40-\$45. Purchase online or call 516-599-6870. Elmont Memorial Library Theatre, 700 Hempstead Tpke., Elmont. www.plazatheatrical.com



ECOTHERAPY SANDS POINT PRESERVE

4/19: 2pm. Monthly Sessions Celebrate the April showers with balance, renewal and growth. Ecotherapy, also known as Forest Bathing, or Shinrin-Yoku, is the practice of connecting with Nature; of walking with Nature rather than through it. Certified guide Linda Lombardo leads monthly sessions. Register \$45 members, \$50 non members. Discount for multiple sessions. 12 Middle Neck Rd., Sands Point. Call 516-570-2185 or Pre-register:
www.SandsPointPreserveConservancy.org

FISHING CLINIC AT JONES BEACH

4/19, 10am-12:00pm. Adults & kids 6+ Join an educator and learn about the fish that live in Jones Bay, free rod and reel fishing clinic. Catch and release only. Jones Beach Energy and Nature Center, 150 Bay Pkwy, Wantagh. RSVP required:
www.jonesbeachenc.org

FREE HEALTH SCREENINGS

4/21, 10am-2pm. St. Francis Mobile Clinic. For adults, blood pressure check, blood tests for cholesterol and diabetes & wellness visit. No appointment needed, Fuschillo Park, Carle Rd at Broadmoor Lane, Carle Place

SEND US YOUR EVENTS

Published weekly on www.MarketPlacePublications.com
Have your event listed free. Send at least 1 week in advance to:
info@marketplacepublications.com

Hop In For a New Look

New Stylish Frames Just In,
Including Smart Glasses.

PROGRESSIVES

Complete Pair,
Quality Frame & Lenses

\$229

SPORTS SAFETY GLASSES

30% OFF

For kids & adults, #1 Choice

SAME DAY GLASSES!

45 minutes in most cases

EYE EXAM

\$39



Sunny Skies!
Take advantage of our BOGO
deal which includes
SUNGLASSES
Prescription or Non Prescription

**Buy One Pair,
Get Second Frame**
50% OFF
Valid on any prescription complete
pair of glasses or sunglasses.
Mix & match.
Higher price prevails. Some restrictions may apply.
With ad expires 4/30/26



WIZE EYES

EYEWEAR OF NEW HYDE PARK

Serving Long Island Over 30 Years

Large Selection of Stylish & Designer Frames

• Gucci • Tom Ford • Versace • YS • Coach • Raybans • Oakley & More.

The Doctor is available 6 days a week

Specials for limited time only. Some restrictions apply. Available at the New Hyde Park location only.

Most Insurance & Union Plans Accepted

2090 B Hillside Ave., New Hyde Park,
(Corner of Marcus Ave.)

516-358-4040

www.WizeEyesNewHydePark.com

**OPEN
7 DAYS**

EARTH TALK

From the Editors of E/The Environmental Magazine

Are some forests starting to release more CO2 into the atmosphere than they are absorbing due to so many dying trees from pest infestation and wildfire? – Frank M., Mastic, NY

Forests are vital carbon sinks: They absorb more carbon dioxide (CO2) than they emit, playing a crucial role in regulating the climate. Through photosynthesis, trees pull CO2 from the atmosphere and store it in their trunks, branches, leaves and roots. This helps slow climate change by reducing greenhouse gases. But a concerning trend has emerged: Some forests now release more CO2 than they absorb, shifting from carbon sinks to sources. This is being driven by pest infestations, wildfires, and climate change.

Forests naturally fluctuate between absorbing and releasing CO2, but long-term trends matter. "It's natural for forests to cycle through times where they are carbon sinks and then carbon sources," says Tony Vorster, a research scientist at the Natural Resource Ecology Laboratory. Rising temperatures exacerbate stressors like pest outbreaks and drought. When trees reach critical temperature thresholds, they release more CO2 than they absorb, increasing warming in a dangerous feedback loop.

Pests and pathogens also pose threats. Infestations and diseases kill trees, reducing

CO2 storage. Invasive species worsen the problem, increasing tree vulnerability. "Climate change often makes trees even more susceptible to damage from insects and disease," says Leigh Greenwood, Director of The Nature Conservancy's Forest Pests and Pathogens program. Wildfires also drive forest carbon loss. Severe fires release stored carbon, kill mature trees and limit future carbon sequestration. In some cases, forests transition to shrublands with lower carbon storage. Increased wildfire frequency, fueled by climate change and dry conditions, creates a feedback loop: More fires release more CO2, further warming the planet.

Effective forest management helps. Treatments like prescribed burns and thinning reduce wildfire severity and protect long-term CO2 storage. Ecologically informed treatments prioritize large, healthy trees; biomass utilization converts dead wood into low-carbon products. "A diverse forest that combines small and big trees and species diversity is more resilient," notes Chonggang Xu, a senior scientist at Los Alamos. Strong policies and funding are essential. Increased funding is needed for research, monitoring and sustainable forestry practices. Incentives like Farm Bill programs and public-private partnerships can help. According to the World Resources Institute, fuel treatments and biomass utilization could support 49,000 jobs in rural communities for 20 years.

EarthTalk, c/o E/The Environmental Magazine, P.O. Box 5098, Westport, CT 06881; submit it at: www.emagazine.com/earthtalk/thisweek/, or e-mail: earthtalk@emagazine.com.

Picture It!

Guess This Familiar Place in Nassau County



WIN! Bag of Bagels & Cream Cheese Hand Rolled Bagels of New Hyde Park

April 1st Answer:

Paramount Inn Floral Park

Winner:

Cheryl Spigonardo of Floral Park

TAP HERE TO ENTER ONLINE marketplacepublications.com/contests

1 winner chosen per week from correct entries. Answers must be received by following Tues at 12 pm. Winner will be called & announced with their name & photo on our Facebook & Instagram pages.



SAVE \$250 ON ALL TOURS!

MORE THAN 50 GUIDED TOURS AVAILABLE



MUST BOOK BY 3/31

Grand Alaskan Cruise & Tour

12 DAYS INSIDE CABIN STARTING AT \$3,549 \$3,299*

BASED ON JUL 8, 2026 DEPARTURE

- Marvel at Alaska's natural beauty in Denali National Park
- Visit Alaska's the Alaska Wildlife Conservation Center
- Cruise Glacier Bay and Wrangell St. Elias National Park
- Travel through the legendary Inside Passage



MUST BOOK BY 3/12

Historic Route 66 – 100th Anniversary

16 DAYS STARTING AT \$4,099 \$3,849*

BASED ON APR 18, 2026 DEPARTURE

- Visit sights like the starting point of Route 66 in Chicago, the Cadillac Ranch in Amarillo, and the "End of the Trail" sign in Santa Monica
- Explore natural wonders of the Grand Canyon, Petrified Forest National Park, and the Painted Desert

CALL US: 1-855-818-0427

*Per person based on double occupancy & includes tax service/gov't fees. Ask your Travel Consultant for terms & conditions. Add-on airfare with transfers available for most major gateways.